



■ *Release Notes & What's New*

■ *ISS45 8.1.8.0-090*



ISS45 Release Notes

Date of Issue	Product ID Num.	Part Number	Brief Description
January 2005	45001/081	89000195	Initial Release
Other Releases: 89000233, 89000263, 89000263, 89000308, 89000308, 89000401, 89000417, 89000416, 89000480, 89000490, 89000508, 89000521, 89000532, 89000547, 89000573, 89000583, 89000587, 89000590, 89000613, 89000641, 89000658, 89000683, 89000692, 89000693, 89000712, 89000720, 89000734, 89000737, 89000740, 89000747, 89000748, 89000758, 89000767, 89000782, 89000791, 89000792, 89000793, 89000794			
December 2013	45001/081	89000796	8.1.7.0-090 Release
May 2014	45001/081	89000812	8.1.7.0-120 Release
October 2014	45001/081	89000815	8.1.7.0-150 Release
February 2015	45001/081	89000822	8.1.7.0-160 Release
March 2015	45001/081	89000825	8.1.7.0-170 Release
June 2015	45001/081	89000833	8.1.8.0-050 Release
June 2015	45001/081	89000854	8.1.7.0-190 Release
September 2015	45001/081	89000861	8.1.8.0-050 Release Issue 2
September 2015	45001/081	89000862	8.1.8.0-060 Release
October 2015	45001/081	89000863	8.1.8.0-070 Release
December 2015	45001/081	89000872	8.1.8.0-080 Release
April 2016	45001/081	89000873	8.1.8.0-090 Release

**©Copyright NCR Corporation 1995-2016
All rights reserved**

This publication is protected by federal copyright law. This document and its contents are the proprietary, confidential information and property of NCR Corporation ("NCR"). Unauthorized disclosure, reproduction, distribution or use of this document and/or its contents in any form is strictly prohibited. No part of this publication may be reproduced or transmitted into any human or computer language in any form or by any means, stored in a retrieval system, transmitted, redistributed, translated or disclosed to third parties, or de-compiled in any way including, but not limited to, photocopy, photograph, electronic, mechanical, magnetic or manual without the express written permission of NCR or its licensors, if any. This document, notwithstanding the above, may be distributed in electronic or printed form by NCR to personnel who are employed by either (a) a licensee and end user of the subject system of this document or (b) personnel from an authorized NCR Channel Partner or Solution Provider of the subject system of this document. All copies of this document so distributed and/or so authorized, shall contain a full copy of this copyright notice.

NCR has prepared this document as a guide to the proper installation, operation, customization and/or maintenance of NCR products. The drawings and specifications contained herein are the property of NCR and/or its licensors.

NCR endeavors to ensure that the information in this document is correct and fairly stated but does not accept liability for any error or omission. NCR makes no representation or warranties with respect to the contents hereof, and specifically disclaims any implied warranties of merchantability or fitness for a particular purpose or non-infringement. No commitments by NCR or its suppliers are made by or from this documentation which is provided for information only.

Development of NCR products and documentation is continuous: NCR reserves the right to revise this publication and to make changes at any time to the contents hereof or to the products herein described or discussed without notice and without any obligation for NCR to notify any person or organization of such revision or changes. Information published in this document will likely be superseded, and it is recommended that users regularly check for updates and newer versions.

The trademarks NCR, Retailix, StoreNext, ISS45, ScanMaster, R10, ACS, PocketOffice, RPO, RBO, ABO, Connected Payments, ServerEPS, Connected Services, Connected Loyalty, WinEPS and all other NCR product names are registered trademarks or trademarks of NCR; all other trademarks or registered trademarks are the property of their respective owners. Third-party products, services, or company names referenced in this document may be trademarked or copyrighted by their respective owners, and are for identification purposes only. Copyrights, trademarks and license agreements shall be governed and construed in accordance with the laws of the State of New York and the Federal Arbitration Act, and shall benefit NCR, its successors, and assigns.

Address comments and corrections regarding this document to:

Attn: Software Program Director
NCR
797 Commonwealth Drive
Warrendale, PA 15086

Table of Contents

Table of Contents i

Introduction 1

447386 – Add Option to WIC CVV Program to Allow Non-Whole Dollar Vouchers..... 2

 Front Office 2

447389 – Apply Windows Updates 7

451731 – Document MTX dll versions..... 7

452294 – Assist Mode for Manual Store Coupons and Discounts 8

453059 – Survey Template Enhancement 13

 Front Office 14

Introduction

A few enhancements were recently made to the Retalix ISS45 system. The changes are reflected in the accompanying ISS45 8.1.8.0-090 software. The Change Request Document (CRD) numbers assigned to the enhancements are listed in the description heading. Following the change descriptions are an abbreviation of the ISS45 areas affected:

(POS) – Point of Sale

(GSP) – General System Parameter

The enhancements are explained in detail in the following pages and are included in your Retalix ISS45 User and Installation Guides. If you have any questions regarding this release, please contact Retalix Support.

447386 – Add Option to WIC CVV Program to Allow Non-Whole Dollar Vouchers

This enhancement adds a new option to the FrontOffice General System Parameters to instruct the POS to execute a control check in the case where a non-whole dollar amount was entered in the WIC CVV Amount dialog.

Only whole-dollar amounts were previously permitted to be entered in the WIC CVV Amount dialog. The entry of a non-whole dollar amount would result in an error message. But the new option in the WIC CVV paper program has eliminated that error message and whole-dollar amounts can now be entered for a WIC CVV voucher amount.

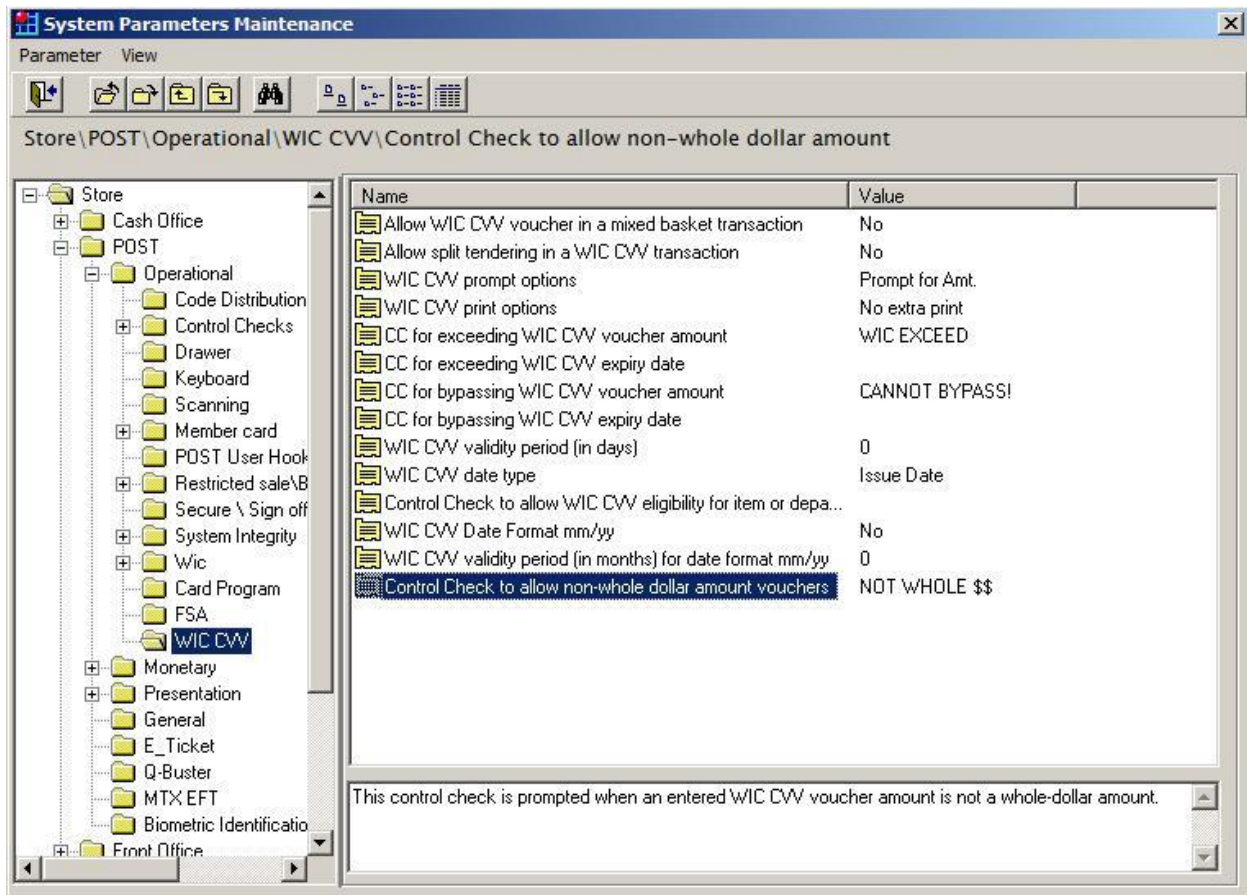
However, a store may still choose to prevent non-whole dollar amounts if they wish by creating a control check and assigning the control check in the new Front Office parameter.

Front Office

New Parameter

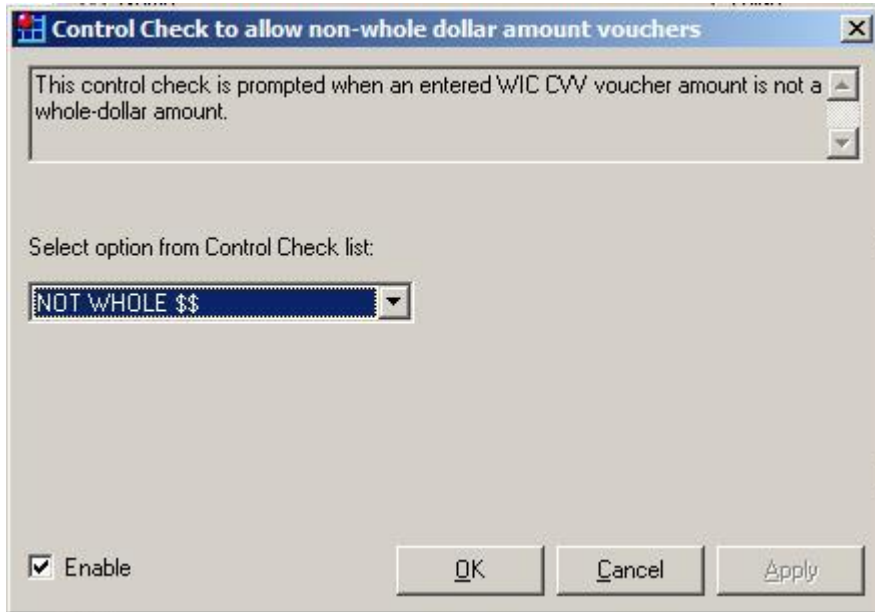
The following new General System Parameter is located in the Store\POST\Operational\WIC CVV.

Parameter	Explanation
Control Check to allow non-whole dollar amount vouchers	This control check is prompted when an entered WIC CVV voucher amount is not a whole-dollar amount.

**Note:**

When a user selects the WIC CVV folder, it displays the existing list of WIC CVV control check folders. Selecting the “Control Check to allow non-whole dollar amount vouchers” folder displays its control check list window.

Click on the drop down box to select from the options displayed in the Control Check list.

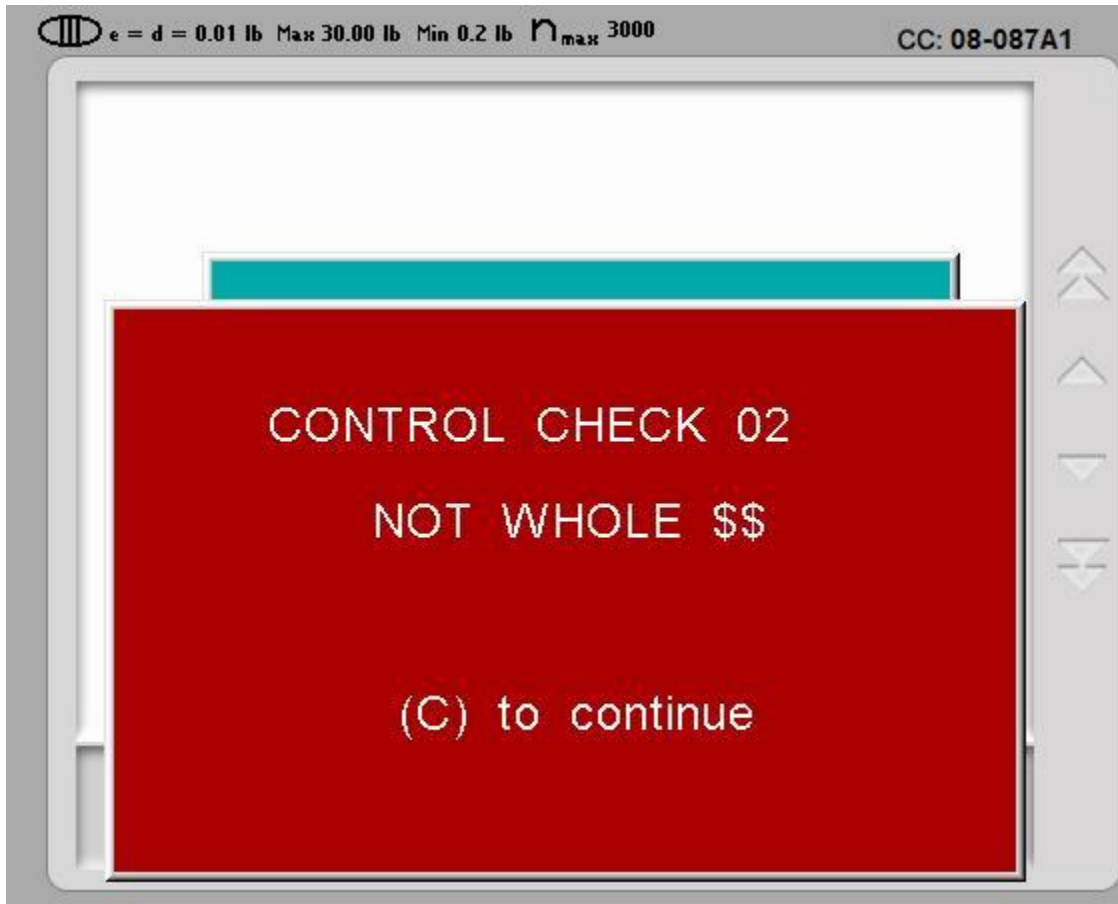


The following Point of Sale screens display the WIC Voucher amount prompt and Control Check configuration.

When the WIC Voucher amount is prompted, the screen displays the following transaction details.



The following screen displays the results when the Control Check is configured to prohibit non-whole dollar amount.



447389 – Apply Windows Updates

The latest Windows Updates have been tested and applied in this release of the ISS45.

- This release was tested with the available Windows Updates applied 2/15/2016.

MFS1 - Nobilis - Windows 7 Profession SP1

POS - Fujitsu 3K - WePOS

451731 – Document MTX dll versions

The updated MTX dll versions of Connected Payments and WinEPS are in this release of the ISS45.

- This release was tested with the following Connected Payments and WinEPS dlls.

Connected Payments

MTX_POS.dll	828.1.0.98
MTX_EPS.dll	828.1.11.625
MTX_SE.dll	828.1.0.3
WinEPS	
MTX_POS.dll	828.1.1.207
MTX_EPS.dll	828.1.1.372

MTX_POS_CP.dll	828.1.0.98
MTX_POS_WinEPS.dll	828.0.1.207
MTX_POS_EMPTY.dll	No version

452294 – Assist Mode for Manual Store Coupons and Discounts

For the 8.1.8.0-090 patch, a new FastLane SSCO Transaction Broker was released to support Assist Mode functionality for Manual Store Coupon Entry and Total Sale Discounts at tender time. Coupon, \$Trans Discount and %Trans Discount buttons are only available in Assist Mode when SSCO is in tender mode.

This Transaction Broker install is version Retailix ISS45_5.00.01.00.37. Please reference the release notes that accompany the SSCO TB install.

SCOTOPTS.000 option

A Manual Percent Discount limit was added to the SCOTOPTS.000 to all the Percent entered not to exceed a determined amount. The default is 99.

[ManualDiscount]

PercentageLimit=99

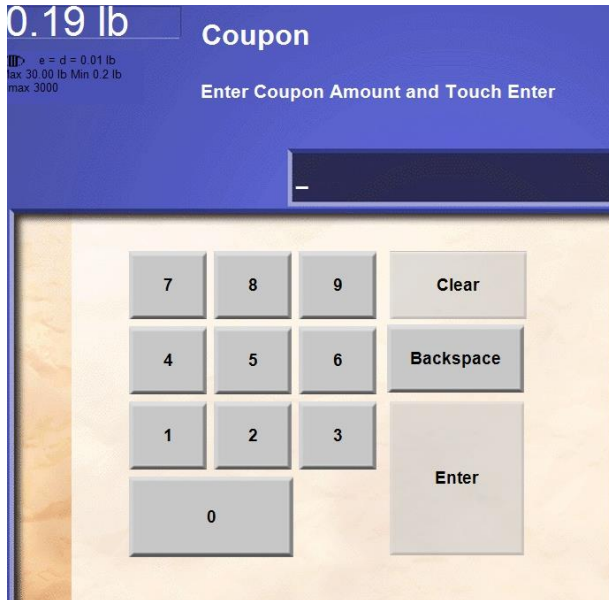
Tender Assist mode

The following buttons are only available when the SSCO is in tender mode.



Manual Store Coupon Entry

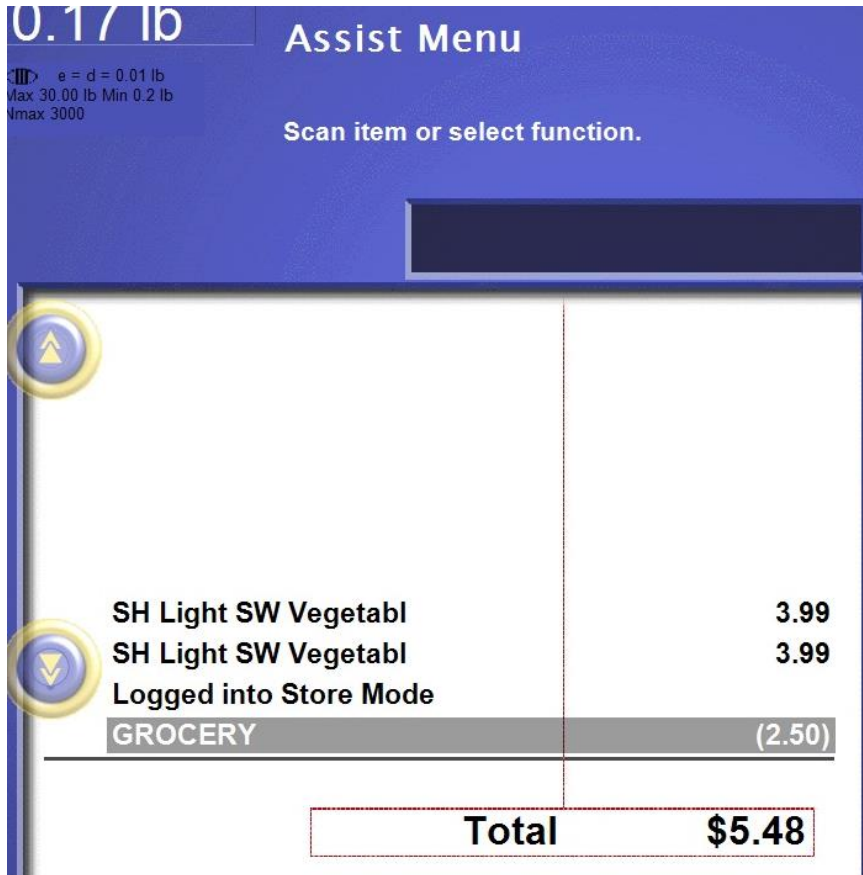
When pressing the Coupon button, the attendant has the opportunity to enter the dollar amount of the Store Coupon.



Then selects the department the coupon will apply.

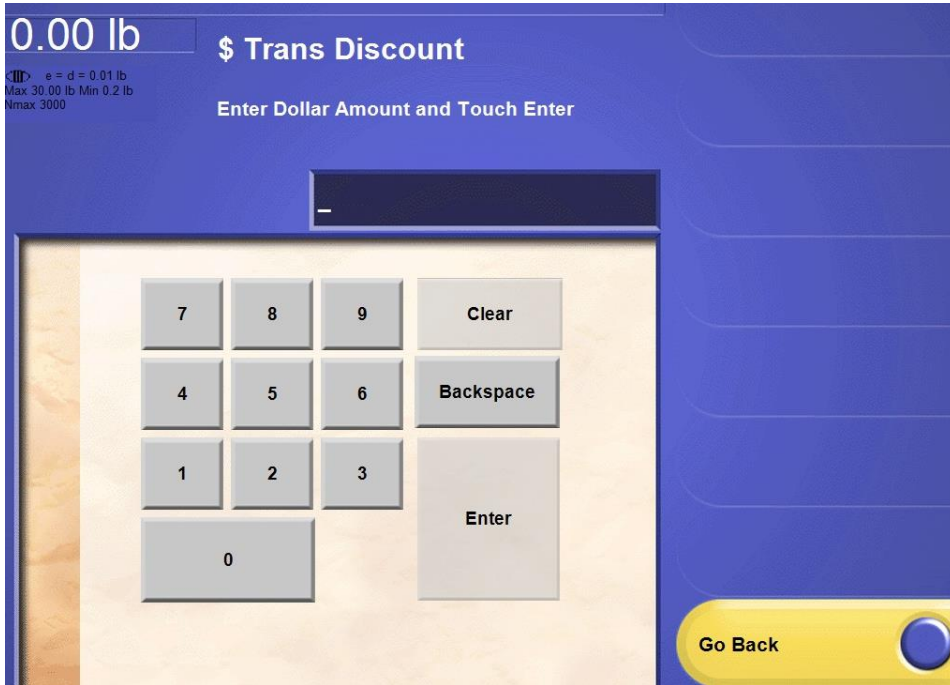


The \$ Trans Discount will display on the e-receipt and customer receipt.



\$ Transaction Discount

When pressing \$ Trans Discount Button, the attendant has the opportunity to enter the dollar amount of a discount.

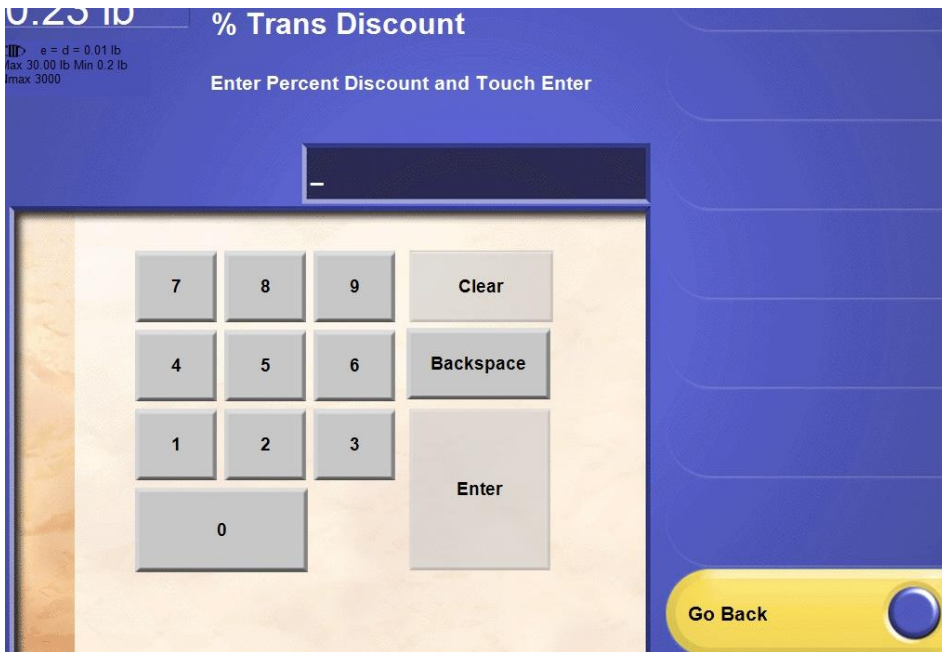


The \$ Trans Discount will display on the e-receipt and customer receipt.

SH Light SW Vegetabl	3.99
SH Light SW Vegetabl	3.99
Logged into Store Mode	
\$2.50 Discount	(2.50)

% Trans Discount

When pressing % Trans Discount Button, the attendant has the opportunity to enter the percent amount of a discount.



The % Trans Discount will display on the e-receipt and customer receipt.

SH Light SW Vegetabl	3.99
SH Light SW Vegetabl	3.99
Logged into Store Mode	
5% Discount of \$7.98	(0.40)
Total	\$7.58

453059 – Survey Template Enhancement

This enhancement adds 2 new options to the Front Office General System Parameters to allow an alternate Survey format.

Currently, the following format is supported:

Voucher # format
MMDDSSSSCPPTTTT

MM – Month 2 digit
DD – Day 2 digit
SSSS – store #
C – check digit
PPP – POS #
TTTT – Ticket #

This format is still valid and can be used when following the 16th digit code that is used by loyalty.

The alternate Survey format is as follows:

Voucher # format encoded:
T3 H2 Y1 T2 S2 M2 T1 S1 P2 M1 D2 S3 D1 H1 P1 C

MM – Month 2 digit
DD – Day 2 digit
Y – Last digit of year
HH – Military Hour
SSS – AWG #
PP – POS #
TTT – Ticket #
C – check digit

Following the Voucher # format: The first digit is the 3rd digit of Ticket #, second digit is 2nd digit of Military Hour, third digit is the last digit of year, etc....

The Check Digit is calculated using Standard Mod10method.

- From the right to left, start with odd position, assign the odd/even position to each digit
- Sum all digits in odd position and multiply the result by 3
- Sum all digits in even position
- Sum the results of steps 3 & 4
- Divide the result of Step 4 by 10

The check digit is the number which adds the remainder to 10

Front Office

New Parameter

The following new General System Parameter is located in the Store\POST\General.

Parameter	Explanation
Enable Alternate Survey Format Value: Y/N	This option prints survey voucher numbers in the following format: T3 H2 Y1 T2 S2 M2 T1 S1 P2 M1 D2 S3 D1 H1 P1 C
Alternate Survey AWG Number Value: 3-digit short integer, range: 0-999	The AWG number is used in the alternate survey number when "Enable Alternate Survey Format" is enabled.



© NCR Corporation, 2016

NCR endeavors to ensure that the information in this document is correct and fairly stated but does not accept liability for any error or omission.

The development of NCR products and services is continuous and published information may not be up to date. It is important to check the current position with NCR. This document is not part of a contract or license, save insofar as may be expressly agreed.

NCR Corporation
2651 Satellite Blvd.
Duluth, GA 30096

P/N 89000873
PIN 45001/081